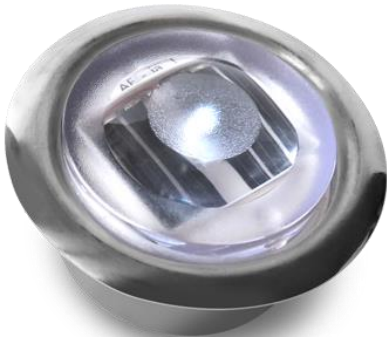


Model: GF

2" Round Pathway Light



Operation Specifications

Charge Time	3 Hours/8 Hours Cloudy
Operating Time	Up to 16 Hours
Compressive Strength	24,517 N / 5,516 lbf
Water Proof Rating	IP68
Operating Temperature	-40°F to 158°F
Dimensions (in)	Ø 2.75" x 1.5"
Weight (lbs)	0.18#

Lighting Specifications - Luminance (Lux)

Model	Function	Color	Avg	Min	Max	Uniformity
GF	Steady	Red	20.2	17.2	26.6	65%
		Green	72.4	42.4	87.5	48%
		Blue	2	1.5	2.2	69%
		Yellow	25.5	18.5	30.6	60%
		White	41.3	31.5	53.1	59%

Component Specifications

Single Mono-Crystalline Solar Cell	Solar Module Size	34 x 26mm
	Solar Maximum Output Power	0.0894W
	Solar Operating Current	30mA
	Solar Voltage	2.98V
LED	LED Size	Ø 3
	LED Current	20mA per each
	LED Operating Current	0.26mA
	LED Voltage	3V
	LED Wattage	0.0024W
	LED Quantities	1 pcs
Pseudocapacitor	Pseudocapacitor	2.3V 120F
	Number of Semicapacitors	3 pcs
Materials of Construction	Case: 304 SSSL Housing: T/C (SIBIC Innovation Plastics Korea) Lens: B/C (LG CHEM, 112R-112)	
Electronic Controller	MAIN PCB (TOREX, NXP)	